

SHOW RULES & INFORMATION

1. **One hanging entry per person, two display or sitting pieces.** Your piece(s) can be “new” to the CBG Glass Art Show, or not exhibited in the past 2 years.
2. Complete and send a form for your entry along with a fee of \$10. This fee is non-refundable.
Make check payable to the Cheyenne Botanic Gardens.
3. An Artist Statement may be included with the Entry Form, if the artist chooses to do so.
4. If you choose to have your piece for sale to the public, we will have you fill out a W-9 form when you drop off your piece.
5. Entry must be **ready for display** upon delivery. Sawtooth & chain hanging systems will not be allowed. Pieces will be hung by CBG staff utilizing a gallery-style two wire hanging system.
6. Entry **form** must be received by 5 p.m. Friday, January 15. Late entry forms will NOT be accepted.
7. Glass pieces must be delivered to the Cheyenne Botanic Gardens, please rank your first three choices of a time slot for drop off between **8 a.m. and 2 p.m. on Monday, January 25th.**
8. A **15% commission** is awarded to the Gardens for all artwork sold during the show. Sold pieces cannot be removed until the show closes.
9. **EARLY PICK-UP WILL NOT BE ALLOWED. Artist/Buyer pick up is on Monday, March 15. from 8 a.m. to 5 p.m.** ALL art pieces require a pick-up receipt for release.
10. **TAKE CARE TRANSPORTING ARTWORK TO AVOID CRACKING DUE TO TEMPERATURE CHANGES.**
11. **All pieces must be able to hang or be in a display cabinet with an 12” depth.**

LIABILITY: I consent to, and will abide by the Glass Art Celebration’s regulations: I understand and agree that the City of Cheyenne, the Cheyenne Botanic Gardens, show sponsors or any person(s) associated with the show are not liable for loss or damage of any kind to my entry(s).

Mail completed entry forms & fees to:
CHEYENNE BOTANIC GARDENS, GLASS ART CELEBRATION
710 South Lions Park Dr., Cheyenne, WY 82001

ENTRY FORM—Fill out and submit to the Cheyenne Botanic Gardens.
Complete this form for your entry.

Artist Name: _____
Business Name: _____
Address: _____ Phone: _____
City: _____ State: _____ Zip: _____
E-mail: _____
Artwork Title: _____
Category: _____ Sale Price _____ Not for Sale _____

HOW SHOULD PIECE BE DISPLAYED:
(please check only one box):

WINDOW

WALL

DISPLAY CASE

Entry Size:

Width _____

Length _____

Depth _____ (12” max)

Is stand included with Artwork Sale ? _____

Please include a photo of your piece. This can be emailed to abales@cheyennecity.org.

Please pick your first, second and third choice for drop off times in the below time slots for delivery of your piece to the Cheyenne Botanic Gardens on Monday, January 25.
We will contact you via email to confirm your allotted time.

8 to 9 a.m. 9 to 10 a.m. 10 to 11 a.m. 11 a.m. to 12 p.m. 12 to 1 p.m. 1 to 2 p.m. 3 to 4 p.m. 4 to 5 p.m.

*Liability: I consent to, and will abide by the Glass Art Celebration’s regulations: I understand & agree that the City of Cheyenne, The Cheyenne Botanic Gardens, show sponsors or any person(s) associated with the show are not liable for loss or damage of any kind to my entry(s).

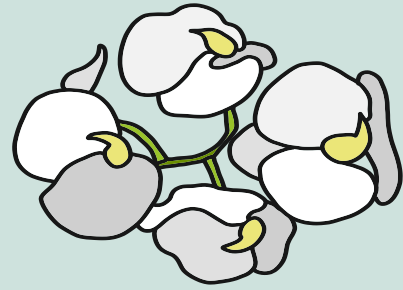
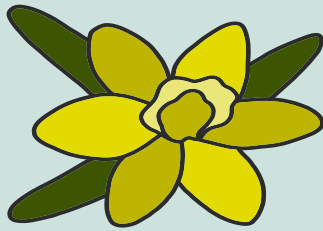
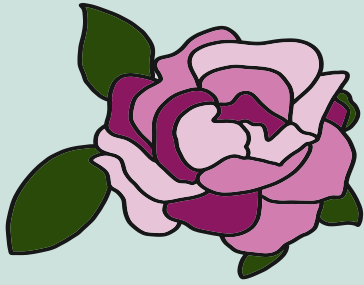
EARLY PICK-UP WILL NOT BE ALLOWED. SEE ENTRY RULES.

ARTIST’S SIGNATURE _____

ENTRY PICK-UP RECEIPT

Fill in name & title below (# will be assigned). Do not detach from entry form. **You must present this receipt to pick-up the piece.**

Name: _____ Piece Title: _____ Entry # _____



38TH ANNUAL
GLASS ART SHOW

JANUARY 26 - MARCH 13, 2021

710 S LIONS PARK DRIVE, CHEYENNE

Proudly presented by the Cheyenne Botanic Gardens,
Blue Federal Credit Union and
Glass Artists of Wyoming Club.



With the current situation of battling a worldwide pandemic, the Cheyenne Botanic Gardens has taken every precaution to create a safe environment for the public. We require masks, have a consistent sanitizing routine, encourage social distancing and limit visitation numbers. This has also resulted in the temporary closure of the second and third floors of the Shane Smith Grand Conservatory. In an effort to hold the Glass Art Show this year, it will be on display in the Orangerie on the first floor. Since this is a smaller space than the second floor, we will now limit entries to one per person and schedule a drop off and pick up time in order to keep the procedures as safe as possible. Please contact us at 307-637-6458 if you have any questions or concerns.

This highly attended and successful event is open free of charge to the public at the Cheyenne Botanic Gardens Grand Conservatory. The Conservatory is handicap accessible.

Hours: Tuesday—Saturday, 10 a.m. to 3 p.m.

For additional information visit www.botanic.org or call 307-637-6458.

As a participating sponsor, the “Glass Artists of Wyoming” encourage an open & friendly show. Photography and sharing of ideas and technology is encouraged. The Gardens present a wonderful range of lighting and display options. When possible the Gardens staff tries to accommodate artists requests as pieces are put on display. Higher than average sales, reasonable entry fees and low commission fees (15%) make the show successful for all.

For GAW club membership information contact GLASS ARTISTS OF WYOMING at 307-638-9265